

Aldreds
Estate Agents



4, Old Foundry Court Old Road, Acle, NR13 3QG

£262,500





£262,500

4, Old Foundry Court Old Road

Acle, Norwich, NR13 3QG

- Modern Terraced House
- Three Bedrooms
- Recently Refitted Kitchen
- Enclosed Garden with Southerly Aspect
- Popular Broadland Village
- Spacious Accommodation
- Generous Lounge Diner & Conservatory
- Gas Central Heating
- Convenient Central Location
- Be Quick to View!

Aldreds are delighted to offer this conveniently located, modern three bedroom house, situated in the much sought after Broadland village of Acle. This deceptively spacious property offers accommodation including an entrance porch, lounge/diner, conservatory, a recently refitted kitchen/breakfast room, ground floor cloakroom, three bedrooms and bathroom. The property further benefits from gas fired central heating, parking, an enclosed garden with a Southerly aspect and an integral garage. Early internal viewing is highly recommended to appreciate this well presented modern home.



Entrance Porch

Part glazed entrance door, window to front aspect, radiator, telephone point, door giving access to;

Lounge/Diner 19'1" x 10'7" (5.84m x 3.23m)

Door to inner hallway, radiator, power points, television point, windows to front aspect, glazed French doors leading to;

Conservatory 9'1" x 8'0" (2.77m x 2.46m)

Of a timber construction on a brick built base with a pitched Polycarbonate roof with glazed French doors leading to garden, power points, television point, radiator.

Inner Hall

Stairs to first floor landing with under stair cupboard, thermostat, doors leading off;

Cloakroom

Low level w.c., pedestal hand wash basin, ventilation.





Kitchen/Breakfast Room 10'4" x 9'8" (3.15m x 2.95m)

Window to rear aspect, part glazed composite door to rear, tiled flooring, a range of fitted kitchen units with rolled edge work surface and tiled splash backs, sink drainer with mixer tap, integrated electric oven and gas hob, stainless steel extractor, plumbing for dishwasher, power points, telephone point, breakfast bar, radiator, door giving access to garage.

First Floor Landing

Loft access, power point, doors leading off;

Bedroom One 12'5" x 11'8" (3.8m x 3.56m)

Window to rear aspect, radiator, power points, television point.

Bedroom Two 10'7" x 8'3" (3.25m x 2.54m)

Window to front aspect, radiator, power points.

Bedroom Three 10'2" x 6'11" (3.12m x 2.11m)

Window to rear aspect, radiator, power points.

Directions

On arriving in the village of Acle on the A47 at the Acle roundabout proceed into New Road, as the road bears round to the left onto The Street, turn immediately right and follow the road round to the right onto Old Road where Old Foundry Court can be found almost immediately on the left hand side before reaching the Olive Tree Take Away.



Bathroom

Obscure glazed window to rear, tiled flooring, radiator, white suite comprising of panelled bath with tiled surround, low level w.c., pedestal hand wash basin with tiled splash back, tiled shower cubicle, ventilation.

Integral Garage 16'2" x 8'3" (4.93m x 2.54m)

Electrically operated up and over door, power, lighting, wall mounted gas fired combination boiler for hot water and central heating, a range of fitted cupboards, plumbing for washing machine.

Outside

The property is approached with vehicular access to the rear of the property with parking space for one car and access to garage. To the front of the property is a pleasant enclosed garden, decked and brick weaved with external lighting, timber garden shed, a gate gives convenient pedestrian access towards The Street in the centre of the village.

Tenure

Freehold.

Services

Mains water, electric, drainage and gas.

Council Tax

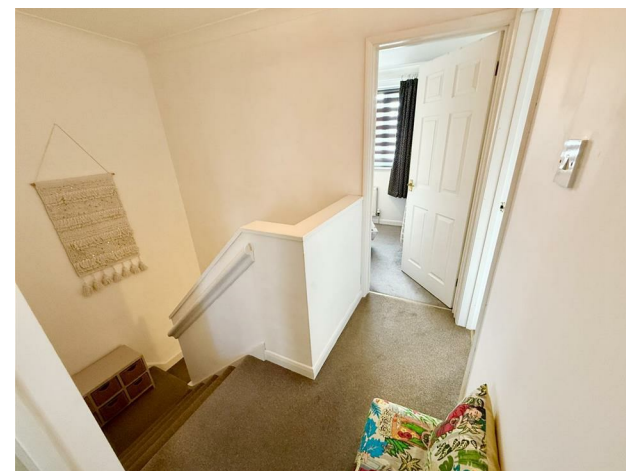
Broadland District Council - Band: B.

Location

Acle is an attractive village situated almost midway between Great Yarmouth and the fine City of Norwich on the A47 * There is a good selection of local shops, modern community centre, indoor bowling centre and playing fields, health centre, library, veterinary surgery, public houses, primary & high schools, boat dyke connecting to the River Bure and regular bus and railway services operating to Great Yarmouth approximately 8 miles away and the City of Norwich approximately 11 miles away.

Reference

PJL/S9950



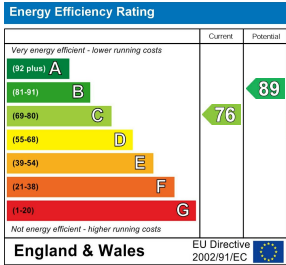
Floor Plans



Location Map



Energy Performance Graph



Viewing

Please contact our Aldreds Stalham Office on 01692 581089 if you wish to arrange a viewing appointment for this property or require further information.

Disclaimer
These particulars are issued on an understanding that all negotiations shall be conducted through Messrs. Aldreds. Please note: Messrs. Aldreds for themselves and for the vendors or lessors of this property whose agents they are given notice that: 1. Particulars are set out as a general outline only for guidance of intending purchasers or lessees, and do not constitute nor constitute part of, an offer or contract. 2. All descriptions, dimensions, references to condition and necessary permissions for use and occupation, and other details are given without responsibility and any intending purchasers or tenants should not rely on them as statements or representations of fact but must satisfy themselves by inspection or otherwise as to the correctness of each of them. 3. No person in the employment of Messrs. Aldreds has any authority to make or give any representation or warranty whatever in relation to this property. 4. If you are proposing to visit the property and are travelling some distance please check with Aldreds on the issue of availability prior to travelling. 5. Aldreds Property Consultants and associated services may offer additional services to the prospective purchaser for which they will be entitled to receive a commission. Aldreds are pleased to be working with Mortgage Advice Bureau. They're an award-winning mortgage broker with over 1,400 advisers across the UK, and have access to over 12,000 mortgage products from over 90 lenders. Aldreds Estate Agents Ltd receive a commission of £200 on each completed case. Your home may be repossessed if you do not keep up repayments on your mortgage. There may be a fee for mortgage advice. The actual amount you pay will depend upon your circumstances. The fee is up to 1%, but a typical fee is 0.3% of the amount borrowed. Mortgage Advice Bureau is a trading name of Mortgage Seeker Limited which is an appointed representative of Mortgage Advice Bureau Limited and Mortgage Advice Bureau (Derby) Limited which are authorised and regulated by the Financial Conduct Authority. Mortgage Seeker Limited Registered Office: Lovewell Blake, Sixty Six North Quay, Great Yarmouth, Norfolk, NR30 1HE. Registered in England Number: 03721415. 6. Potential purchasers should check with their providers that the broadband and mobile phone coverage they would require is available.